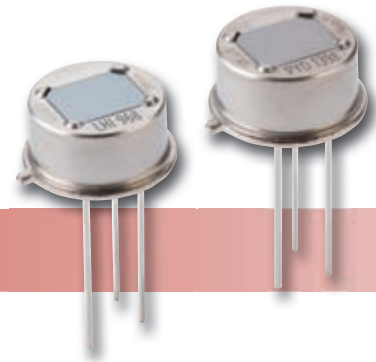


# Pyroelectric, Dual-Element Detectors For Intrusion Alarms



## LHi 968, PYD 1398 – High-End Pyro

### Applications

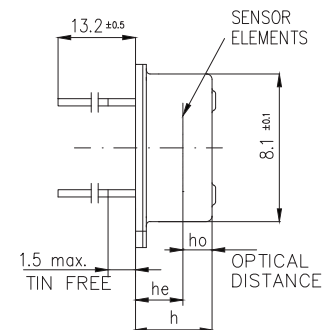
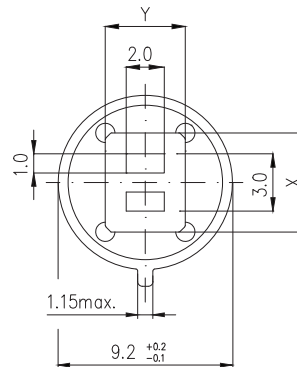
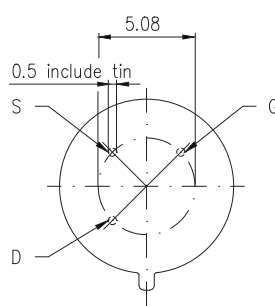
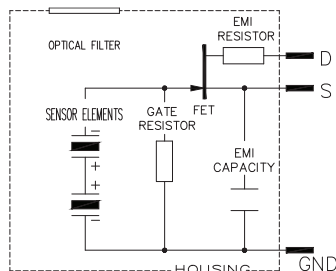
- Intrusion Alarms
- High-end Motion Sensors

### Features and Benefits

- TO-5 metal housing
- Improved EMI protection
- Reduced (WLI)

### Product Description

The analog LHi 968 series with Dual Element configuration is performance-proven top of the line product in high-end applications. The LHi 968 design provides for a reduced sensitivity to EMI and excellent White Light Immunity (WLI). PYD 1398 offers a higher level of RF immunity and is optionally available with grading for lower white light sensitivity.



### LHi 968 and PYD 1398

Parameter	Symbol	LHi 968	PYD 1398	Unit	Remarks
Responsivity, min.	$R_{min}$	3,3	3,3	kV/W	f = 1 Hz
Responsivity, typ.	R	4	4	kV/W	f = 1 Hz
Match, max.	$M_{max}$	10	10	%	
Noise, max.	$N_{max}$	50	50	$\mu V_{pp}$	0,4...10Hz/20°C
Noise, typ.	N	20	20	$\mu V_{pp}$	0,4...10Hz/20°C
spec. Detectivity	$D^*$	19	19	$10^7 cm^* \sqrt{Hz/W}$	1Hz / 1Hz BW/20°C
Field of View, horizontal	FoV	100°	100°		unobstructed
Field of View, vertical		100°	100°		unobstructed
Source Voltage		0,2...1,5	0,2...1,5	V	47 kΩ, 20°C, VDD=10V
Operating Voltage		2,0...10	2,0...10	V	47 kΩ, 20°C
EMI performance		**	**		
White Light performance		**	***		Excelitas test set up
Height	h	4,2	4,2	mm	
Optical Element Location	he /ho	2,6 / 0,95	2,6 / 0,95	mm	
Filter Size	X x Y	5,2 x 4,2	5,2 x 4,2	mm	